

60p

SEPTEMBER 2019

St Giles Review

The Vision of St Giles is to be a church that worships, welcomes and shares God with all our community and beyond



*To have St Giles Review delivered
to your door please contact*

Sue Ball: ensue@hotmail.co.uk

IN THIS ISSUE:

**New Horizons
Harvest
Behind the Scenes
Services**



Parish Church of Bramhope



0113 414 1809



VICAR: REVD TOM LUSTY

vicar@stgilesbramhope.org.uk

Prayer is at the heart of St Giles

Do you need prayers or Holy Communion ?

PLEASE let us know if you or your friends/relations would like someone to pray with you. Perhaps you need Holy Communion bringing to you at home or in hospital when unable to get to Sunday Worship.

Please contact :

Revd Tom Lusty 414 1809

Bryan Bunday 267 8534

Jonathan Slater 284 3136

Healing Prayer Group & Sick List

THIS group is made up of ordinary Christian people who believe in the power of prayer, put their faith in God and want to pray for you.

It meets regularly to pray for everyone on our Sick List and in our Book of Prayer.

All requests are treated in the strictest confidence.

If you would like prayer either write your request in the Book of Prayer at the back of church or contact Tom, Bryan, Jonathan or Mary Mumby (see Directory, p34 & 35).



Prayer Schedule for Bramhope

WE pray weekly, in conjunction with the Methodist Church, for all people living in our area.

1st Sept 2019

Old Lane, Occupation Lane, Hilton Court, Grange & Mews

8th Sept 2019

All people living outside the Parish who worship with us

15th Sept 2019

Staircase Lane & Hall Drive

22nd Sept 2019

Leeds Road, Ashcroft House, St. Giles Garth & Glenmore Court

29th Sept 2019

Hall Rise, Hall Close, Hall Rise Close & Hall Rise Croft

More Diamonds!



Congratulations to Michael & Margaret Coles who have just celebrated their diamond Wedding.





Do you remember your first day at school? Quite surprisingly I remember my first day at Infant school but don't have much recollection about Junior school or Grammar School. This probably means it was quite a traumatic experience! I do hope that's not the case for all our youngsters in today's world. Perhaps the Words of Wisdom (p7) might help. I hope you like our new style Events pages(p11) and if there is anything you would like to be included in future, please send it to our email address, stgilesreview@gmail.com (the editor reserves the right to include). Would you like to join the team of journalists? We are specially interested to hear from our younger people - what they've been doing, achievements etc. Let's celebrate them! Oh, and don't forget Harvest!

stgilesreview@gmail.com

Gill



50-50 CLUB

ARE YOU IN IT?

It is only £5.00 per month by regular

standing order, of which £2.50 goes directly to church and £2.50 goes in

the prize draw fund.

You have to be in it to win it so pick up a form from the Church lobby or speak to Sarah Shay.

Aug 50-50 Winners:

1st Prize (£67.50) – Helen Reid

2nd Prize (£40.50) – Anne Marshall

CONTENTS

| | | | |
|-----------------|----|----------------------------|----|
| Prayer | 2 | Behind the Scenes | 21 |
| Tom writes.... | 5 | Warden's Blog | 23 |
| Words of wisdom | 7 | Brain Teaser | 25 |
| New Beginnings | 9 | Remembering Christina Shaw | 27 |
| Events | 11 | Diary, Register & Rotas | 28 |
| Harvest | 17 | Directory | 30 |
| New Horizons | 19 | Church services | 32 |

Legal Services for the Elderly

- Wills
- Probate
- Inheritance Tax
- Estates
- Trusts
- Powers of Attorney
- Mental Capacity
- Living Wills
- Cost of Care



61 High St, Yeadon, LS19 7SP

Also in Leeds LS1, Bradford and Pudsey

www.morrishsolicitors.com

Contact

Monika Volsing

Tel: 033 3344 9609

Please present this voucher at your inquiry
and **5% of your fee will be donated** to St
Giles, Bramhope



**At Headingley Hall, we offer
a flexible range of person
centred services:**

- Residential Care
- Apartments with Care and Support
- Respite Care and Holiday Stays
- At Home – Apartment Client Services

Find out more at
www.westwardcare.co.uk
or call 0113 275 9950

5 Shire Oak Road,
Headingley, Leeds LS6 2DD



Headingley Hall

WE have just returned as a family from the island of Iona on the West Coast of Scotland. I was invited to lead a pilgrimage round the island for the group staying at Bishop's House. The last time I had done so was twenty-five years ago when working there as a volunteer.

On one of the pilgrimages I was involved with in 1994, an elderly nun had slipped and broken her leg at one of the remotest possible locations. Getting her to hospital involved me running to the nearest landline phone to call an air ambulance. I was also worried that I wouldn't be able to find the hermit's cell. It is said that it moves each time you try to

find it so I did a number of reconnaissance visits earlier in the week to be on the safe side.

The day of the island pilgrimage came and it all went well: I found the hermit's cell and our group - made up of diverse ages and walking abilities - got round without incident.

We used this prayer by Pat Bennett upon

reaching our goal. It struck me as a good prayer to use when we get the chance to go *right away*, for example when on holiday.



*Lord of the silences –
speak to me:
in the blowing of the wind;
in the rustling of the grass;
in the sound of the sea;
in the beating of my heart;
in the stirring of my spirit –
speak Lord.
I am listening.*

Grow Your Church

Remember the pea and peat pot that Tom gave us all many months ago? Ta da!!



Tom



GREEN RENOVATIONS

ALL ASPECTS OF HOME MAINTENANCE

- External & Internal painting, one room or the whole house
- Tiling, grout tidy, sealing
- Domestic joinery and flooring
- General fixing around the home
- Flat pack assembly

Fully insured + References available
Free quote + Hard working + Reliable
Large and small jobs welcome
Reasonable rates + 10% OAP discount

Tel Rupert on:
07904 929171



Hire St Giles' Church Hall

Contact the Hall
Booking Secretary:

Julie Tomkins
284 2187
julie@tomkins.org.uk

Senior & Rhodes Ophthalmic Opticians

*Professional eyecare
for all the family*

Individual advice

Extensive selection of frames
from Budget to Designer

Contact Lenses

Repair Service

46 Station Road
Horsforth
Leeds
LS18 5NR

Tel: 0113 258 0548

108 Leeds Road
Bramhope
Leeds
LS16 9AN

Tel: 0113 230 1327

M. MILNER

WINDOW CLEANING
SERVICES

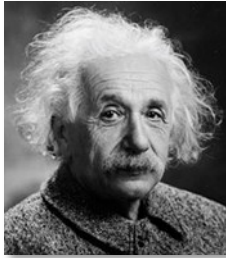
FOR A GOOD RELIABLE
SERVICE
CALL MARK ON
MOBILE EVENINGS
07880 545544 0113 2843194

CLEANING SERVICES
WINDOW SILLS
FRAMES-FASCIAS
GUTTERS



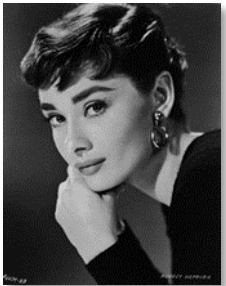
Promise me you'll always remember: You're braver than you believe, stronger than you seem and smarter than you think. *A A Milne*

Life is really simple but we insist on making it complicated. *Confucius*



A person who never made a mistake never tried anything new. *Albert Einstein*

It's fine to celebrate success but it is more important the heed the lessons of failure. *Bill Gates*



Make-up can only make you look pretty on the outside but it doesn't help if you are ugly on the inside... unless you eat the make-up. *Audrey Hepburn*

Education is the most powerful weapon which you can use to change the world. *Nelson Mandela*



When I went to school they asked me what I wanted to be when I grew up. I wrote down 'Happy'. They told me I didn't understand the assignment and I told them they didn't understand life. *John Lennon*

Words of Wisdom

at the start of a new term



PVC

WINDOW MEDIC

Window - Door - Lock Repairs

For all your PVC and lock needs

Broken or damaged
windows, hinges,
handles or locks -
We are here to save
you money

For a free quote
call Adam on

07852 833121

pvcwindowmedic@gmail.com

Lily's
of bramhope

Independent, qualified florist for all your needs

- Funeral tributes & sympathy arrangements
- Free wedding flower consultations
- Parties, occasions and events
- Cards, Gifts, helium balloons

0113 2843454

1 The Parade, Bramhope, LS16 4AF

Lilysofbramhope@live.co.uk

New Beginnings and Continuing Journeys

September is now the month that marks the beginning of a new year in the life of a School Community.

Heavenly Father, we pray that all children back at School this September will have the courage and the energy to take up their school work and to be excited by it.

Help them to be good and faithful members of their Schools and to be a good influence on others at their Schools.

Grant too to all teachers and support staff wisdom and commitment in all their work at their Schools. Amen

For many this September and autumn it will be their first day at School, their first day at a new School or their first day in Further Education

So calm and allay their fears and help them to get used to their new and different surroundings as they begin or continue the work of learning new things . Help them to know themselves. Amen

Here at St Giles, September is the time when we come together again to continue our journey through all the Seasons of the Church's Year.

Lord God, we thank you for calling us into the company of those who trust in Christ and seek to obey his will. May your Spirit guide and strengthen us in mission and service to your world. For we are strangers no longer but pilgrims on the way to your Kingdom. Amen.

Prayer from the Council of Churches for Britain and Ireland

Compiled by Jonathan Slater



POPSIE'S
QUALITY FISH & CHIPS
— BRAMHOPE —

LUNCH TIME SPECIALS

Medium
FISH & CHIPS
with Peas or Curry £3.95

☎ 0113 284 2178

Church groups and
events catered for

**10% DISCOUNT
WITH THIS VOUCHER**



Arthur Clemens

PAINTER AND DECORATOR

43 LONG MEADOWS · BRAMHOPE · LEEDS LS16 9DU

High Class Interior & Exterior
work undertaken

For Free Estimates call

0113 267 6485

Mobile 0788 7681793

events

September & October 2019

PATRONAL FESTIVAL

St
Giles Bramhope

Sunday 1st September

9.30am

An outdoor Service (weather permitting) celebrating St Giles of Provence, our Patron Saint.

Guest preacher: Revd Ben Rhodes

CATS TODDLER PRAISE

Wednesday

4th September 10am

Back for the new term in the Meeting Room . This term we're concentrating on the wonderful gory stories of the Old Testament. First up is Joseph and his coat of many colours. Suitable for Under 5's and their Carers, a 20 min service followed by refreshments.



**MARIE CURIE
WITH FAYE CRYER**

Wednesday

4th September 2pm

St Giles Mothers' Union are holding this event. Visitors and new members are welcome. Followed by refreshments.



BLESSING OF THE BACKPACKS



**Sunday 8th September
9.30am**

Our ever popular All.together Service suitable for all ages.

Independent Financial Advisers

Helping you understand and plan for

- Your Retirement
- Your Estate and Inheritance Tax
- Your Financial Freedom in Your Business

www.rockwoodfs.co.uk

info@rockwoodfs.co.uk



Rockwood

financial solutions

Tel: 0330 332 2679

Kingswood House, 80 Richardshaw Lane, Pudsey, LS28 6BN

L.V. Windows



A Friendly Family Company with
over 40 Years of Experience in
Bramhope and North Leeds

- UPVC Windows & Doors
- Conservatories
- Facias and Soffits
- Replace Steamed-up Units
- Replace Security Locks

Call Len Hawkins on 01423 562 469 or 07836 513 730

or Chris Hawkins on 07765 143 334

SEPTEMBER - contd

BRAMHOPE SHOW

Sunday 8th September
1- 4pm

Held at the Robert Craven Village Hall. All the fun of the fair. A great opportunity to get that village community feeling...come and say Hello at the St Giles Stall.

WOMEN'S FELLOWSHIP FASHION SHOW



Tuesday 10th September
7.30am

Tickets are £3 from committee members.

“ One should try everything once with the exception of incest and morris dancing, *Malcolm Sargent*

”

CATS IS BACK!



Wednesday 11th September
9.15 - 11.30am

Our popular toddler group returns for a new term. £3 per family.

MEN'S SUPPER CLUB LADIES NIGHT

Wednesday 12th September
7pm at Headingley Golf Club



Bookings by 24th August. Please also let Jim know if you intend being at the meeting on 10th October.

OPEN HOUSE
Wednesday 18th September
2-4pm

Come for tea and cake with friends old and new.

Funeral Services

Devoted to families for 60 years



**SUPERIOR CHAPELS OF REST,
HEARSES AND LIMOUSINES**

- Pre-paid funeral plans
- Stationary
- Monumental masonry
- Floristry
- Catering
- Function rooms
- 24 hour service
- Jaguar fleet

"Dedicated to care"

Denisons Funeral Service

1-3 Towngate, Guiseley • T: 01943 872619

Goods Funeral Service

12 Boroughgate, Otley, LS21 3AL

T:01943 462646

Steels Funeral Service

Kirk Lane, Yeadon • T: 0113 250 2424



Part of Dignity Funerals Ltd – A British Company



Funeral Services

OCTOBER

MEET & EAT



Wednesday 2nd October

12 noon

We're back again with our delicious lunches. A freshly cooked meal amidst friends, old and new. Cost is only £5. Please book your place with Jude on 203 7975 or Sheila on 318 8707.

Future dates for Meet & Eat are:

Wednesday 2nd October

Wednesday 6th November

Wednesday 4th December

Wednesday 5th February

Wednesday 4th March

Wednesday 1st April

Please note there will be no meal in January as it will be New Year's Day. We have added one in April instead.

PIZZA CHURCH



Sunday 6th October 5pm

St Giles Church Hall

A NEW venture in collaboration with the Methodist Church. Aimed at Teens, it will involve a brief act of worship and of course, pizza!

CHURCH SERVICES

Details of all our services are on the back page of this magazine

FUTURE DATES FOR YOUR DIARY.....

NSPCC CHRISTMAS FAIR

Tuesday 5th November

10 - 12 noon

St Chad's Parish Centre

ASHCROFT HOUSE

Residential Care Home

*Caring for your
Needs and Choices*

At Ashcroft House we aim to provide that little bit extra:

- Lots of tender loving care from well trained carers*
- Good company, stimulation and laughter*
- A Home where each resident's privacy, independence and dignity are paramount*

**Ring or call round and see us at anytime
18 Leeds Road • Bramhope • Leeds LS16 9BQ**

Tel: 0113 284 2822

Email: enquiries@ashcroft-house.co.uk

Website: www.ashcroft-house.co.uk



D. P. A. FLETCHER (BUILDERS) LTD

**All aspects of Building, Joinery
& Property Repairs**

Over 30 years of experience

Tel: 0113 263 0515

jackie.dpafletcherbuilders@gmail.com



ALL TOGETHER @HARVEST

**Sunday 13th October at
10.30am**

Our All Age Service @Harvest will be for everyone! It's at Harvest that we not only thank God for the food from our farmers but for all the good things that He gives us.

The Band will be leading us with some lively songs in a church full of flowers and produce. **Please bring along donations for Caring for Life (Housing Support)**

Guest Preacher: Revd Roger Smith

DIY CARVERY!

**Sunday 13th October
12 noon**

After the act of worship we will join together in fellowship for a three course meal.....with a difference! We cook the meat (& veg) for each table of 10 and you choose the Master of the carving knife!

(Aprons and hats provided!)

Why not Book a table for 10?

Bar & Raffle

Tickets Adults £10, Children (5-16yrs) £5, Under 5's free.

If you could offer to cook a fruit pie please sign list in lobby

Thank you

Tables of 10 will get soup, a joint of meat, potatoes & vegetables brought to the table, you designate a Carver and serve yourselves. Dessert will be fruit pie and custard.





Andrew Gamble Property Maintenance

Full range of services including roof and gutter work, power washing, small building projects, pointing and exterior painting.

Fully insured; no obligation quotes.

Call 07912 760561

Email gambles39@tiscali.co.uk



Proud to be supporting our local community



Contact us for your free
valuation and marketing appraisal

Whether it's starting school, moving school or leaving home, here's how one family coped.....

As we approach the end of the summer we are starting to think about the new season in our lives. In the Wright family, our son Josh is about to embark upon a new adventure – starting high school. Of course our preparation and thoughts started many months ago as a family, when we started to

identify high schools in the area. During this invited God to join us in our decision making process. We prayed as a couple together and we prayed as a family too, it brought us all great comfort. As parents we agonised over the choices. We had to really lean in and

listen to that little voice in our hearts that was taking us in a direction we didn't expect. Oddly enough Josh seemed to have a sense of where he wanted to be at the very offset. Reflecting upon it now he did say to me at one point, "I feel drawn to the school", "Something's telling me I should go there." Wise words from an

11 year old. Here is an excerpt from a little interview I did with him.

Mum – *"How are you feeling about starting high school?"*

Josh – *"I'm really looking forward to it."*

M – *"What parts / challenges are you looking forward to?"*

J – *"I'm really looking forward to the new opportunities, like Science – I really like Science subjects."*

M – *"How are you going to prepare yourself for high school?"*

J – *"Well, I think I just need to be mature & I've already made some friends there. I*

think I just need to stay cool and be myself."

M – *"What practical things do you think you need to prepare for?"*

J – *"I think my homework will take a bit of getting used to as I will have it every night and make sure its in my bag. Check my timetable to make*

(Continued on page 23)



SENTINEL SERVICING

(Formerly BJR of Bramhope Motor Co, we continue to provide the same, high quality service to Bramhope customers)

SERVICING
MOT WORK
MECHANICAL
INSURANCE
ACCIDENTAL
REPAIRS



UNIT 2
CONEY PARK
HARROGATE RD
YEADON

CARS - COLLECTED - SERVICED - DELIVERED
FOR THE BEST IN PERSONAL SERVICE FOR YOU & YOUR CAR

CONTACT SENTINEL SERVICING

Telephone: 0113 239 1100

SERVING BRAMHOPE MOTORISTS FOR OVER 30 YEARS

North Leeds Physiotherapy and Sports Injuries

Sarah Beldon MCSP

3 Kingsley Road, Adel, Leeds LS16 7NZ

Physiotherapy for all ages!

Suffering with back or neck pain?
A niggling knee or hip? Arthritis?
A sports injury?



Tel: 0113 285 7378

Evenings and weekends available

Physio-led Pilates Classes

during the day and evenings
Please ring for further details



PC's, projectors, cameras.....

This article is the first of a series on "behind-the-scenes". These articles will inform the readership about the many different individuals/groups that are crucial in allowing the church to function.

In 2010? the PCC agreed to install a sound desk, projector and IT equipment in church. Specifically this article deals more with the visual component of the IT system.

Anyone who has been at St Giles for regular or special services will recognise that St Giles is well and truly in the technical age. Most



services start and end with a presentation on the large screen to advertise the various

religious and social activities coming up at St Giles. At the morning services on the second and fourth Sunday of the month the words for the hymns/songs are on the screen; increasingly this facility is becoming common practice at other services too. Some sermons include interaction with the congregation with PowerPoint presentations and families can request this IT facility for wedding or funeral services.

Several members are involved on a rota to work the technical stuff and these include Neil Simpson, John Grahame, Mikey Riley, Bill Cunliffe, Miranda Reynard and Karen Giles.

The IT Team prepare the screen adverts to show at the main 9.30am services and keep the information up to date regarding future services, special events and social occasions. The team also liaise with Tom regarding the songs and hymns to be shown on the screen. The PC in



church has a large database containing most of the hymns that we use on a regular basis. Any new hymns are added as required and team often go into church the day

(Continued on page 25)

Sole Provider Care

**Helping you and your loved ones maintain
independence, dignity and freedom**

- Personal care, companionship, domestic assistance, shopping, trips out, appointments, day and evening sitters, hospital after care and terminal care
- Visits at specified times by the same trained, experienced, DBS checked and insured carers
- Private independent care at affordable rates, £15.00 per hour
£10.00 per half hour
- House cleaning available too, from one off clean to regular visits

Call Beverley on 07496 101 291 or Kelly on 07949 397 878

References available

Retired, but your record keeping and correspondence activities are taking up your free time?

Bespoke concierge * efficient * effective & reliable ap-
proachable * totally trustworthy * no boundaries

Enhanced DBS Certificate

DAVID BRAN\$BY

P.A./SECRETARIAL SERVICES

0113 318 5698—07853 257 662

david.paservices@gmail.com

www.personalcomputertrainingleeds.co.uk

(Continued from page 19)

sure I've got the right equipment for the day, like stationary or PE kit."

M – "What was it that you liked about the school?"

J – "I liked the Christian aspect of the school, I liked that there is a chapel and its in the timetable every 2 weeks."

There are always choices and hurdles to make in life, I'm not sure if there's ever a right or wrong one, more of a journey really. I'm sure over the years to come Josh will have many trials and tribulations to overcome in his school life but for us as a family our greatest tool is prayer and trying to find the space to listen. As we have just celebrated our primary years we are all now excited for our new journey ahead into high school years, every end is a new beginning and we feel well equipped with God in our corner.

Josh has a great framed quote on his wall and I think there no more perfect and apt words for this time in his life.

"Be strong and courageous. Do not be afraid, do not be discouraged, for the Lord your God will be with you wherever you go." Joshua 1:9

Lisa and Josh Wright

Warden's Blog



♪ "...when I'm cleanin' winders"

One of the tasks that have to be carried out each year is to inspect the condition and security of the metal mesh guards protecting the church stained glass windows. Some are in a poor condition and will need replacing soon – but more about that at another time!

Spurred on by the opportunity that the recent scaffolding gave I've attempted to clean the outside of the top windows, all of which I suspect haven't seen a cloth since they were double glazed, 30 years ago. Unfortunately, the ventilation gap provided to avoid condensation between the panes hasn't prevented the ingress of spiders and insects, so many of them are now full of cobwebs. One even contains hundreds of dead ladybirds! So, even though the windows have been cleaned, disappointingly, they don't look any better!

Oh, and if anyone has borrowed the extension reel that normally lives in the Cleaner's Cupboard, would they please return it. Thank you.

Nick



**Cliffe House
Day Nursery**

Ofsted
Outstanding
Provider

Our Bramhope setting now offers full-time places!

With over 20 years experience Cliffe House Day Nurseries offers first class care, learning and development for children aged 2.5 years - 5 years at our Bramhope site, which is situated in the grounds of the Primary school.

We offer a range of sessions from 8am to 6pm,
51 weeks per year.

FREE 30 hours childcare per week.

Available for eligible three & four year olds

Large secure outdoor play areas which ensure a range
of activities, whatever the weather.

Please contact Vida Tohidloo
who will be delighted to show you around.

Breary Rise, Bramhope, Leeds, LS16 9AL

Tel: 0113 284 3004

Email: cliffehousebramhope@yahoo.co.uk

www.cliffehousedaynurseries.co.uk

BRAIN TEASER

Who and what am I better known as?

Florence Nightingale Graham
 Frederick Austerlitz
 Camille Javal
 David Jones
 Maurice Micklewhite
 Maria Magdalene von Losch
 Francis Gumm
 Archibald Leach
 Arthur Jeffison
 Dino Crocetti
 Helen Mitchell
 Robert MacGregor



How did you fare last week? Answers to last month's Brain Teaser were:

| | |
|--|--|
| Adirondacks | USA |
| Catskills | USA |
| Cevennes | France |
| Ghats | India |
| Hindu Kush | Afghanistan/ Pakistan |
| McKinley | Alaska/USA |
| Teide | Tenerife |
| Sierra Nevada | Spain/USA |
| Karakorum | Afghanistan/ Pakistan/China/ India |
| Logan | Yukon Canada |
| Glittertind | Norway |
| Elbrus | Russia |
| They are all Mountains/Mountain Ranges | |

Jean Weatherill

Thank You!

Last month Jean raised £82 for the Fabric Fund with a 'Pop-up' sales table after church. It was a fantastic result in such a



short time. Thank You to Jean for all her hard work (and sales ability!) and she thanks YOU for supporting her. I know she plans another one soon so watch for it 'popping up' after a Sunday 9.30 service.

Jean Weatherill

(Continued from page 21)

before to check all is working for the service. About three years ago an anonymous parishioner paid for the technical stuff to be wired through to the hall enabling services to be relayed when the church is full.

As the saying goes 'it will be all right on the night'. This is usually the case but occasionally mishaps do occur and the techies at the back of the church do not accept that as Orson Welles quoted "to err is human"; the technophobes blame the PC!

Bill and Janet Cunliffe

ANDREW DODSWORTH

PLUMBING & HEATING



Plumbing & central heating engineer

Un-vented hot water cylinders

Central heating power flushing

Boiler repairs and servicing

Bathroom installations

All work guaranteed

24A Canada Cres
Rawdon
Leeds
LS19 6LT

Gas Safe registered
Reg No 187647

Tel: 0113 250 2743

Mob Tel: 07774 479682

www.andrewdodsworth.co.uk

Registered with the Chartered Institute of Plumbing & Heating Engineering (CIPHE)

SLATER'S FUNERAL SERVICE

Genuine Independent Family Business

Established 1884

**135 years caring for the deceased and
bereaved families, offering a personal, caring and
dignified 24 hour service**

covering all areas

Oakford House, 291 Low Lane, Horsforth, LS18 5NU

Tel 0113 258 2395

www.slatersofhorsforth.co.uk

In Memory of Christina Shaw

Dr Christina Shaw lived in Bramhope for many years though she was of Welsh descent. She was married to David and had two children Helena and Owain and a grandson Lewis.

For 25 years she taught French at Leeds Grammar School and was always a good member of the Alto section to sit next to in the school choir!

Christina loved singing and was a member of Leeds Philharmonic and St Giles Church Choir. She was also involved with the Children's Society at St Giles.

After retiring she campaigned hard in the area for the Liberal Democrats. She attended residents groups and parish council meetings across the ward for many years.

At her Memorial Service her brother read 3 French poems that she had translated in her teens. One of David's colleagues commented that he was amazed, especially at her age



then, that Christina not only translated accurately, but that in doing so captured the nuances of the language. Here is one of them:

MUSIC

*Mists swirl about me in the infinite void.
How enticing your song, how ill-spent your power,
O Music, I am drawn by your harmonies, my helmsman;
You steer me, gliding over the bitter deeps.*

*The darkness conceals the ocean's fury;
Your light guides me and my sails are filled.
The waters seethe; but in full-throated joy
Your rhythms upholding me, I ride the waves.*

*The struggle against foundering convulses my body;
The wind soften, the storms abate,
The whirlpool soothes me, but my bliss is gone.*

*All is calm; my senses are numb.
Your force was great but O! how momentary!
From delight I am sunk to the deepest despair.*

A.M.C.M after the theme of Baudelair's La Musique.

Diary for September

| | |
|---------|---|
| Tues 3 | Circle Dancing 7.15 pm |
| Wed 4 | CATS Toddler Praise 10.00 - 11.00 am Mother's Union 2.00 pm |
| Tues 10 | PCC Meeting in the Church 7.30 pm Women's Fellowship 7.00 pm |
| Wed 11 | CATS Toddler Group 9.15 – 11.30 am |
| Thur 12 | Men's Supper Club 7.00 for 7.30 pm |
| Tues 17 | Circle Dancing 7.15 pm |
| Wed 18 | CATS Toddler Group 9.15 – 11.30 am Open House 2.00- 4.00 pm |
| Wed 25 | CATS Toddler Group 9.15 – 11.30 am |

Parish Register

BAPTISM

11th August
Lillie Esca
Grayson-
Shepherd



**Enquiries regarding Baptisms,
Weddings and Funerals
should be made to:
vicar@stgilesbramhope.org.uk**

*To have St Giles Review delivered to your door please contact :
Sue Ball: ensue@hotmail.co.uk*

2019/20 PCC MEMBERS:

| | | | |
|------------------|------------------------------|-----------------|-------------------|
| Revd Tom Lusty | Chair | Jean Bradshaw | Sue Ball |
| Nick Pinches | Churchwarden & Vice-Chair | Alan Tomkins | Lesley Reeves |
| Angela Smith | Churchwarden | Sheila Williams | Eddie Whitehead |
| Jenni Hall | Secretary | John Grahame | Jude Jones |
| Bernard Williams | Treasurer | Krystyna Nova | Karen Giles |
| Jonathan Slater | Ex Officio Reader | Miranda Reynard | Catherine Shields |
| Joy Smith | Deanery Synod Rep | | |

JULY SIDESPERSONS & SOUND DESK*

| SUNDAY | | | |
|------------|--------------------------------|---|-----------------|
| 1st | Bill Cunliffe John Broadley | Philip Kendall-Smith WARDEN* Eddie Whitehead | Joan Archenhold |
| 2nd | NO SERVICE | John Grahame * Mikey Riley Neil Simpson | Fred Archenhold |
| 3rd | Janet Howard | Lisa Wright Bob Lewis Diane Thompson WARDEN* | Michael Coles |
| 4th | NO SERVICE | Janet Cunliffe Jill Perkin Karen Giles* | Alan Woodthorpe |
| 5th | John Grisdale Sue Gamble | Sara Leefe Sue Ball Audrey Harrison WARDEN* | To be confirmed |

Advertisers' Index

Administrative services

| | |
|-------------------|----|
| PA & Computer | |
| Training Services | 22 |

Car Mechanics

| | |
|----------|----|
| Sentinel | 20 |
|----------|----|

Estate Agents

| | |
|------------------|----|
| Manning Stainton | 18 |
|------------------|----|

Day Care

| | |
|--------------|----|
| Cliffe House | |
| Day Nursery | 24 |

Finances and Solicitors

| | |
|--------------------|----|
| Morrish & Co | 4 |
| Rockwood Financial | |
| Solutions | 12 |

Funeral Directors

| | |
|---------|----|
| Goods | 14 |
| Slaters | 26 |

Health & Beauty

| | |
|------------------|----|
| Nth Leeds Physio | 20 |
| Senior & Rhodes | 6 |

House and Garden

| | |
|-------------------|----|
| Andrew Gamble | 18 |
| Arthur Clemens | 10 |
| D PA Fletcher | 16 |
| Green Renovations | 6 |
| Lily's | 8 |
| LV Windows | 12 |
| PVC Window Medic | 8 |

Plumbers and Gas Engineers

| | |
|------------------|----|
| Andrew Dodsworth | 26 |
|------------------|----|

Res/Nursing homes & care

| | |
|-----------------|----|
| Ashcroft House | 16 |
| Headingley Hall | 4 |
| Sole Provider | 22 |

Food retailers

| | |
|-------------|----|
| Pizza Place | 20 |
| Popsie's | 10 |

Window Cleaning

| | |
|----------|---|
| M Milner | 6 |
|----------|---|

Rotas for September

CHURCH FLOWERS

Guild Member: Mary Cooke

| | |
|---------|--------------|
| Sept 1 | Sara Leefe |
| Sept 8 | Marva Fuller |
| Sept 15 | Mary Cooke |
| Sept 22 | Mary Mumby |
| Sept 29 | Lisa Wright |

WELCOME

| | |
|---------|------------------------|
| Sept 1 | Jean Bradshaw |
| Sept 8 | Denise Cooke |
| Sept 15 | Diane Thompson |
| Sept 22 | Suzy Bidgood |
| Sept 29 | Chris & George Hillier |

CATS & TODDLER PRAISE

| | |
|---------|-------------------|
| Sept 4 | Joy & Sue |
| Sept 11 | Jude & Joy |
| Sept 18 | Christine & Diane |
| Sept 25 | Jude & Steve |

COFFEE

| | |
|---------|---------------------------|
| Sept 1 | John & June Pickles |
| Sept 8 | Judy Brown & Sue Henry |
| Sept 15 | Sue Ball & Amanda Reynard |
| Sept 22 | Jim & Alison Richardson |
| Sept 29 | Joan Archenhold |
| | Kathleen Grainge |

GROUNDS

| | |
|---------|----------------|
| Sept 14 | Andrew Rollett |
| | Paul Fletcher |

| | | | |
|-----------|--|-----------------|---|
| Directory | Churchwarden | Nick Pinches | 284 2063 nick.pinches@gmail.com |
| ★ | Churchwarden | Angela Smith | 203 7757 angela.smith200@googlegmail.com |
| Directory | Reader | Jonathan Slater | 284 3136 jslater1721@outlook.com |
| ★ | Parish Administrator | | |
| Directory | & Verger | Mary Mumby | 284 2439 mm@marymumby.plus.com |
| ★ | Bible Reading | Liz Johnson | 284 2523 elizabeth.johnson@almscliffe.co.uk |
| Directory | Brownies (Fri) | Nicola Wall | 4thbramhopebrownies@gmail.com |
| ★ | Brownies (Tue) | Sue Rugg | 07973 914976, 2ndbramhopebrownies@gmail.com |
| Directory | CATS (Toddlers) | Gill Pinches | 284 2063 gill.pinches@gmail.com |
| ★ | Children's Society | Anne Marshall | anne.marshall16@btinternet.com |
| Directory | Christian Aid | Marion Skirrow | 261 4156 mpeycke@hotmail.co.uk |
| ★ | Church Hall | | |
| Directory | - Chairman | Tony North | 284 2143, actnorth@talktalk.net |
| ★ | - Booking Sec | Julie Tomkins | 284 2187, julie@tomkins.org.uk |
| Directory | - Housekeeping | Lisa Wright | 07800 795710 lisa.wright2004@yahoo.co.uk |
| ★ | Church & Hall | | |
| Directory | Fabric | Nick Pinches | 284 2063 nick.pinches@gmail.com |
| ★ | Church Linen | Mary Mumby | 284 2439 |
| Directory | Circle Dancing | Joan Peart | 284 2549 joanpeart@live.co.uk |
| ★ | Coffee Rota | Karen Giles | 267 1785 karenelainegiles@aol.com |
| Directory | Communications | Karen Giles | 267 1785 karenelainegiles@aol.com |
| ★ | Cradle Roll | Jill Perkin | 267 4082 |
| Directory | Deputy Wardens: | Hazel Lee | 284 2573 |
| ★ | | Jean Bradshaw | 267 3715 |
| Directory | | Jean Weatherill | 267 2421 |
| ★ | | Stephen Giles | 261 1785 |
| Directory | | Marion Skirrow | 261 4156 |
| ★ | | John Grahame | 267 3807 |
| Directory | Electoral Roll | Jean Weatherill | 267 2421 |
| ★ | 50-50 Club | Sarah Shay | 267 8056 sarahshay@yahoo.co.uk |
| Directory | Flower Rota | Sara Leefe | 267 4188 |
| ★ | | Marva Fuller, | 284 3227 |
| Directory | Grounds Rota | Alan Tomkins | 284 2187 alan@tomkins.org.uk |
| ★ | Librarian | | |
| Directory | & Archivist | Sue Grahame | 267 3807 |
| ★ | Leading Your Church into Growth | | |
| Directory | - Chair | Tom Lusty | 414 1809 vicar@stgilesbramhope.org.uk |
| ★ | Meet & Eat: | Sheila Williams | 318 8707 |
| Directory | | Jude Jones | 203 7975 |

Men's Supper Club:

| | | |
|---------------------------------|-----------------|-----------------------------------|
| - Convenor | Martin Lee | 284 2145 barni123@hotmail.co.uk |
| - Meeting Secretary & Treasurer | Derek Oworm | 284 3301 derekowram@hotmail.com |
| - Speaker Sec | Jonathan Slater | 284 3136, jslater1721@outlook.com |

Ministry Leadership Team

| | | |
|-------------|-----------------|---------------------------------------|
| - Chair | Tom Lusty | 414 1809 vicar@stgilesbramhope.org.uk |
| - Secretary | Jonathan Slater | 284 3136 jslater1721@outlook.com |

Mothers' Union:

| | | |
|---------------|---------------|----------|
| - Coordinator | Mary Mumby | 284 2439 |
| - Minutes Sec | Joanne Dawdry | 203 7182 |

Nurture Group Committee

| | | |
|------------|---------------|---------------------------------------|
| - Chair | Tom Lusty | 414 1809 vicar@stgilesbramhope.org.uk |
| Open House | June Pickles | 203 7797 |
| | Joanne Dawdry | 203 7182 |

Organist &

| | | |
|-------------|-----------|--|
| Choirmaster | Bob Baker | 01943 466484, bobandmargs@talktalk.net |
| PCC | | |

| | | |
|-------------|------------------|-------------------------------------|
| - Secretary | Jenni Hall | 284 1159 jenni51hall@btinternet.com |
| - Treasurer | Bernard Williams | 318 8707 bswilliams31@gmail.com |

| | | |
|-------------|---------------|-----------------------------------|
| Photography | Bill Cunliffe | 2672326 w.cunliffe@btinternet.com |
|-------------|---------------|-----------------------------------|

| | | |
|-----------------|--------------------------------|----------|
| Planned Giving: | Andrew Taylor & Gillian Taylor | 203 7289 |
|-----------------|--------------------------------|----------|

| | | |
|-----------------|---------------|----------|
| Stewardship Sec | Joanne Dawdry | 203 7182 |
|-----------------|---------------|----------|

| | | |
|--------------|-----------------|----------|
| Photocopying | Hilary Molyneux | 284 3654 |
|--------------|-----------------|----------|

| | | |
|---------------|------------|----------|
| Readings Rota | Mary Mumby | 284 2439 |
|---------------|------------|----------|

| | | |
|-----------------|--------------|----------|
| Risk Management | John Grahame | 267 3807 |
| | Steve Giles | 267 1785 |

Safeguarding Officer**Vacancy - please contact Tom Lusty in the meantime**

| | | |
|--------------------|----------|----------|
| Sidespersons' Rota | Sue Ball | 805 9921 |
|--------------------|----------|----------|

Social Committee

| | | |
|---------|---------------------------------------|--|
| - Chair | Vacancy - please consider this | |
|---------|---------------------------------------|--|

| | | |
|--------------|--------------|---------------------------------|
| Welcome Rota | Gill Pinches | 284 2063 gill.pinches@gmail.com |
|--------------|--------------|---------------------------------|

Women's Fellowship Co-Chairs:

| | | |
|--|-------------|----------|
| | Jenny Platt | 267 8286 |
| | Hazel Lee | 284 2573 |

Directory



Directory



Directory



Directory



Directory

Church Services for September 2019

Sunday 1st ST GILES PATRONAL FESTIVAL

8.15am Holy Communion (BCP)
9.30am Parish Communion (CW)
6.30pm Choral Evensong

Wednesday 4th 10.00am Toddler Praise

Thursday 5th 10.30am Holy Communion (BCP)

Sunday 8th TWELFTH AFTER TRINITY

9.30am All.together Service with Healing Ministry
6.30pm Parish Communion (CW) with Healing Ministry

Thursday 12th 10.30am Holy Communion (BCP)

Sunday 15th THIRTEENTH AFTER TRINITY

8.15am Holy Communion (BCP)
9.30am Parish Communion (CW)
6.30pm Choral Evensong

Thursday 19th 10.30am Holy Communion (BCP)

Sunday 22nd FOURTEENTH AFTER TRINITY

9.30am Together Communion (CW)
6.30pm Parish Communion (CW)

Thursday 26th 10.30am Holy Communion (BCP)

Sunday 29th FIFTEENTH AFTER TRINITY

8.15am Holy Communion (BCP)
9.30am Parish Communion (CW)
6.30pm Choral Evensong

OCTOBER 2019

Wednesday 2nd 10.00am Toddler Praise

Thursday 3rd 10.30am Holy Communion (BCP)

Sunday 6th SIXTEENTH AFTER TRINITY

8.15am Holy Communion (BCP)
9.30am Parish Communion (CW)
6.30pm Choral Evensong